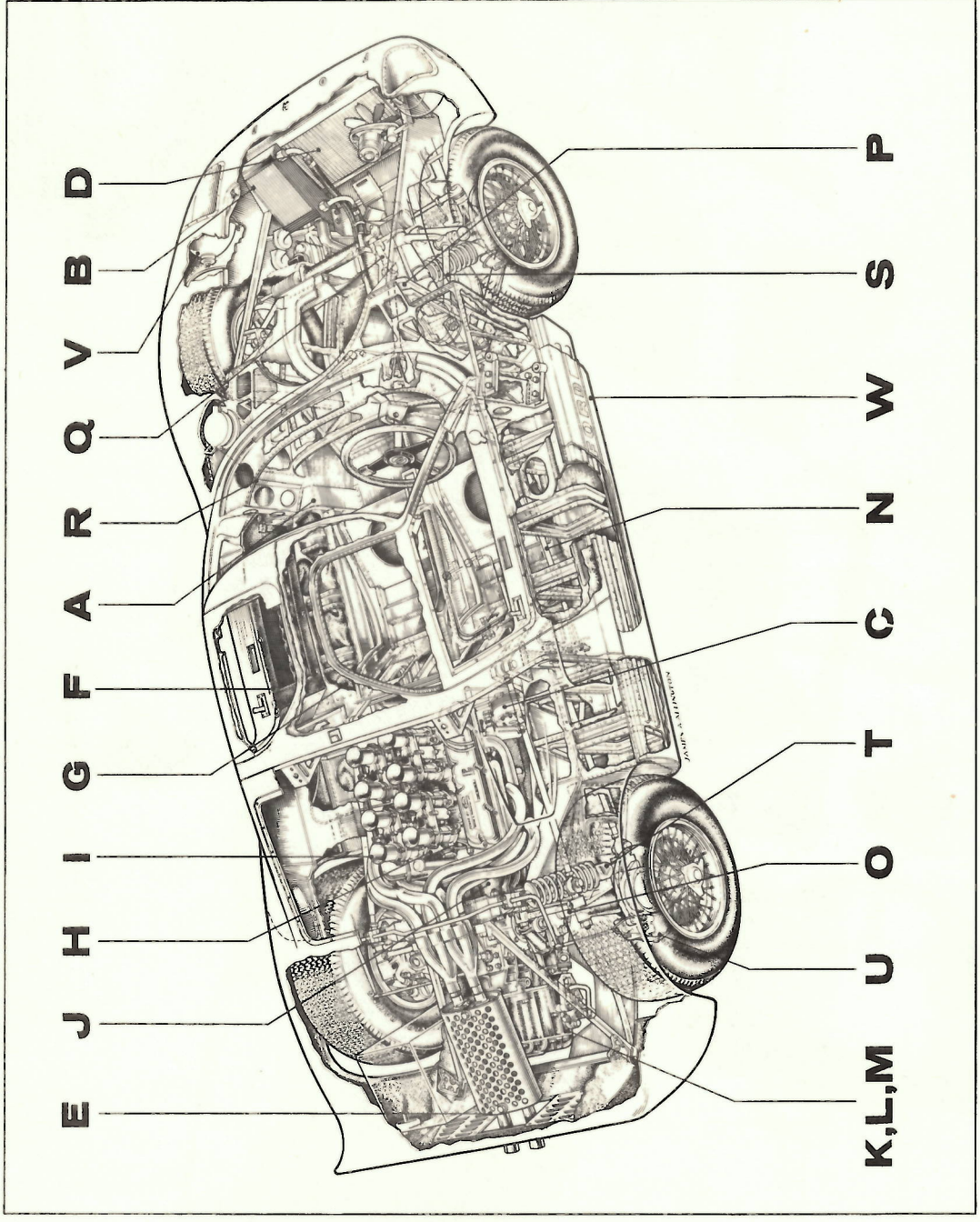


# **FORD** GT40

## **ILLUSTRATED PARTS LIST**

---

**J.W. AUTOMOTIVE ENGINEERING LIMITED**  
714 - 715 Banbury Avenue, Trading Estate, Slough, Bucks  
Tel: SLOUGH 27227



E J H I G F A R Q V B D

K,L,M U O T C N W S P

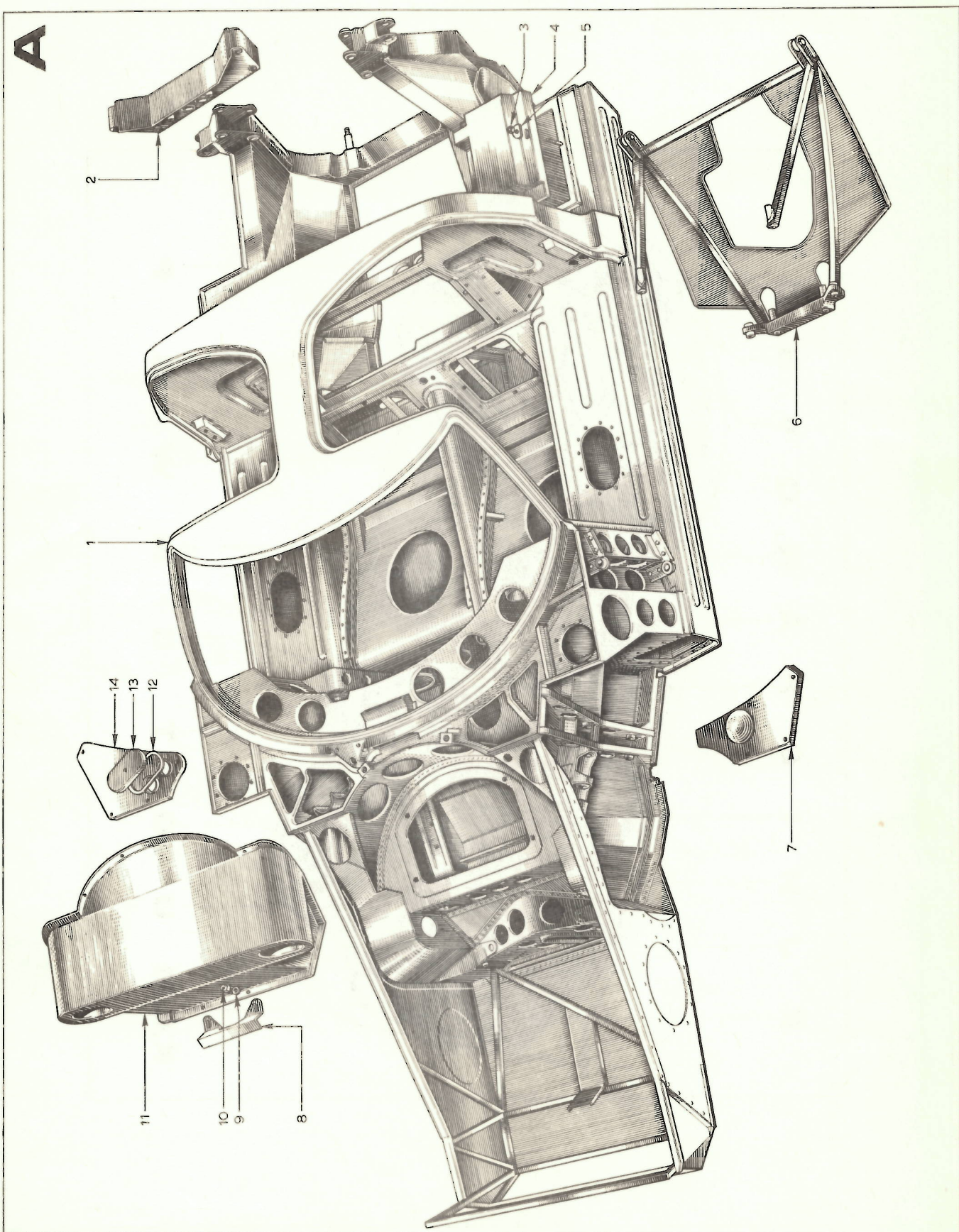


PLATE A

<u>KEY NO.</u>	<u>PART NO.</u>	<u>DESCRIPTION OF PART</u>	<u>QTY.</u> <u>PER CAR</u>
1.	GT40P/1/2500	Chassis assembly complete	1
2.	1/2018	Member, support rear hoop	1
3.	2/3111	Nut, 5/16" UNF nyloc	2
4.	1/2688	Cover, battery	1
5.	2/3446	Washer, 5/16"	2
6.	1/2360	Substructure, rear	1
7.	1/2153	Panel, access L. H.	1
8.	1/2802	Support, spare wheel mounting	1
9.	2/3136	Washer, 3/8" plain	2
10.	2/3113	Nut, 3/8" UNF nyloc	2
11.	1/2624	Chamber, plenum	1
12.	1/2660	Seal, fluid reservoir cover	1
13.	1/2659	Cover, fluid reservoir	1
14.	1/2152	Panel, access R. H.	1

**B**

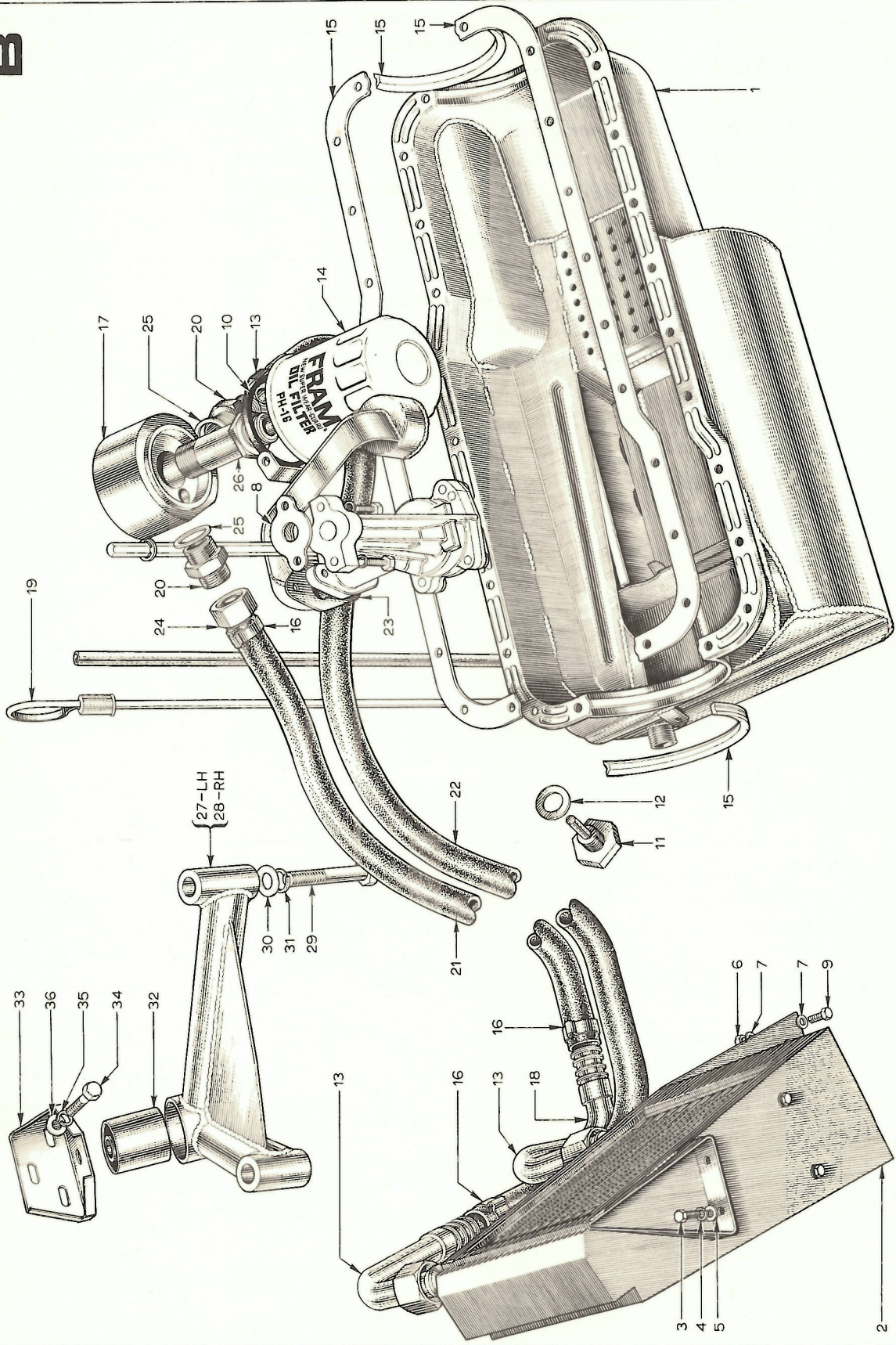


PLATE B

<u>KEY</u> <u>NO.</u>	<u>PART NO.</u>	<u>DESCRIPTION</u>	<u>QTY.</u> <u>PER CAR</u>
1.	GT40P/3/3536	Pan, oil	1
2.	12/6760	Cooler, oil	1
3.	2/3292	Bolt, 1/4" UNF x 5/8" Hex.	2
4.	2/3132	Washer, spring 1/4"	2
5.	2/3131	Washer, plain 1/4"	2
6.	2/3100	Nut, nyloc 2BA	2
7.	2/3130	Washer, plain 2BA	4
8.	3/3599	Gasket, oil pump block	1
9.	2/3175	Bolt, 2BA x 1" Hex.	2
10.	12/6764	'O' ring, adaptor block	1
11.	3/3625	Plug, drain	1
12.	3/3621	Gasket, drain plug	1
13.	12/6770	Elbow, adaptor block	1
14.	12/6763	Filter - oil - Fram	1
15.	3/3595	Gasket set - oil pan	1
16.	12/6772	'O' clip	4
17.	12/6767	Block - adaptor	1
18.	12/6785	Pipe, oil cooler hose	1
19.	3/3631	Dipstick	1
20.	12/6768	Union - adaptor block	2
21.	12/6761/108	Hose - oil	1
22.	12/6761/120	Hose - oil	1
23.	3/3541	Pipe, oil pick up	1
24.	12/6762	Union, oil hose	2
25.	12/6769	Washer, union adaptor block	2
26.	12/6765	Bolt, adaptor/block	1
27.	1/2562	Mount, engine L. H.	1
28.	1/2563	Mount, engine R. H.	1
29.	2/3402	Bolt, 7/16" UNC x 3"	4
30.	2/3138	Washer, 7/16 plain	4
31.	2/3139	Washer, 7/16 spring	4
32.	3/3505	Bush, engine mtg.	2
33.	1/2084	Bracket, engine mtg.	2
34.	2/3078	Bolt, 5/16" UNC x 3/4	6
35.	2/3135	Washer, spring 5/16"	6
36.	3/3629	Washer, engine mtg.	6

C

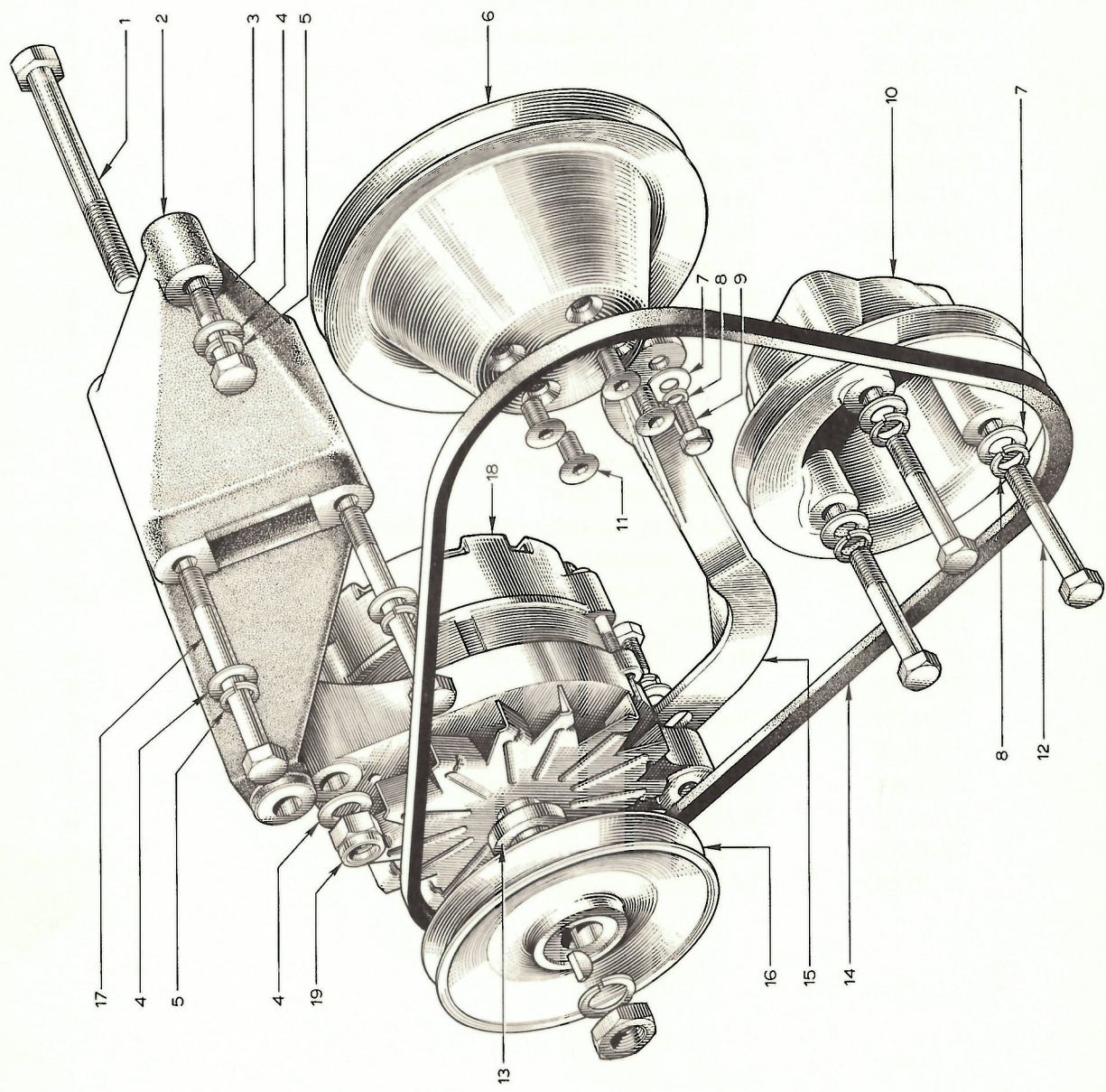


PLATE C

<u>KEY</u> <u>NO.</u>	<u>PART NO.</u>	<u>DESCRIPTION</u>	<u>QTY.</u> <u>PER CAR</u>
1.	GT40P/2/3246	Bolt, 7/16" UNF x 5" hex.	1
2.	3/3500	Bracket, alternator mounting	1
3.	2/3450	Bolt, 3/8" UNC x 1 3/4" hex.	1
4.	2/3138	Washer, plain 3/8"	1
5.	2/3139	Washer, spring 3/8"	1
6.	3/3509	Pulley, water pump	1
7.	2/3136	Washer, plain 3/8"	1
8.	2/3137	Washer, spring 3/8"	1
9.	2/3318	Bolt, 3/8" UNC x 7/8" hex.	1
10.	3/3646	Pulley, crankshaft	1
11.	2/3315	Screw, 5/16" UNF CSK x 3/4"	4
12.	2/3384	Bolt, 3/8 UNC x 3 1/4 hex.	3
13.	3/3630	Spacer, alternator pulley	1
14.	3/3508	Belt, alternator	1
15.	3/3503	Strap, alternator	1
16.	3/3502	Pulley, alternator	1
17.	2/3403	Bolt, 7/16" UNC x 4 1/2"	1
18.	3/3612	Alternator	1
19.	2/3116	Nut, nyloc 7/16" UNF	1



D

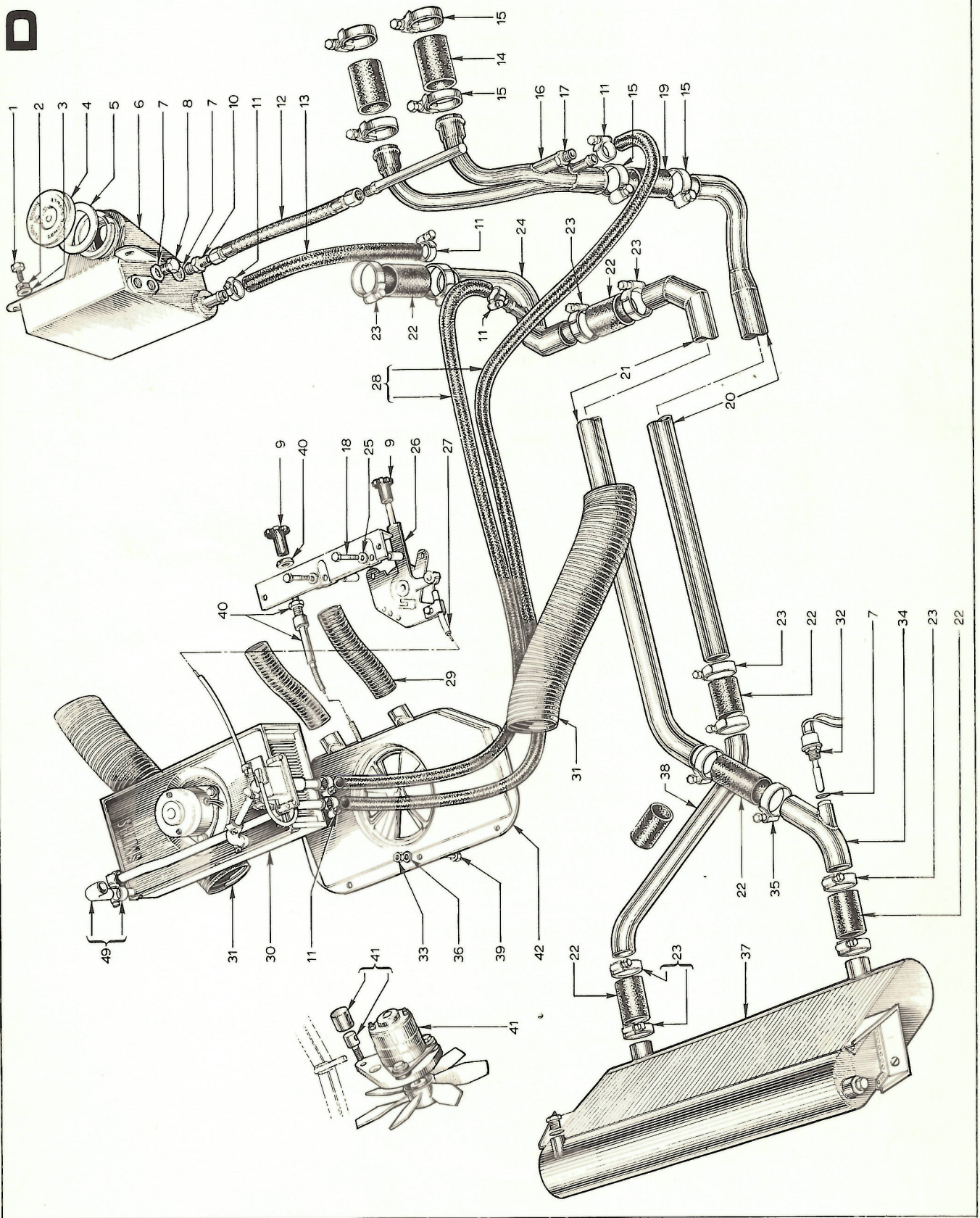


PLATE D

<u>KEY</u> <u>NO.</u>	<u>PART NO.</u>	<u>DESCRIPTION</u>	<u>QTY.</u> <u>PER CAR</u>
1.	GT40P/2/3323	Bolt, 2 BA x 5/8 hex.	3
2.	2/3288	Washer, 2BA shakeproof	3
3.	2/3130	Washer, plain 2BA	3
4.	12/6750	Cap, pressure, header tank	1
5.	12/6793	Seal, radiatic r cap	1
6.	12/6751	Tank, header	1
7.	2/3278	Washer, copper	1
8.	2/3276	Plug, 1/4" BSP	1
9.	2/3356	Knob, heater control	2
10.	2/3328	Connector 1/4 x 1/4 BSP	1
11.	2/3430	Clip, hose 1"	6
12.	12/6758	Hose, Y pipe to header tank	1
13.	12/6797	Hose, 5/8" I.D.	1
14.	12/6796	Hose, 1 3/8" I.D.	2
15.	2/3218	Clip, hose 2"	6
16.	12/6753	Pipe, water outlet Y	1
17.	2/3308	Connector, 3/8 BSP	1
18.	2/3056	Bolt, 2BA x 1 1/8"	2
19.	2/3215	Hose, 1 1/2" bore	1
20.	12/6754	Pipe, outlet cooling system main.	1
21.	12/6755	Pipe, inlet cooling system main	1
22.	2/3216	Hose, rubber 1 3/4 bore	6
23.	2/3217	Clip, hose 2 1/2"	8
24.	12/6794	Pipe, water pump inlet	1
25.	2/3130	Washer, plain	2
26.	2/3350	Control ass., heater	1
27.	2/3351	Cable assy., heater	1
28.	2/3247	Hose, rubber 1/2"	2
29.	2/3357	Hose, heater 1 1/2" ID x 9"	2
30.	2/3349	Heater unit	1
31.	1/2580	Hose, flexible, face vent	2
32.	13/7072	Control, thermol	1
33.	2/3241	Nut, plain 1/4 UNF	3
34.	12/6787	Pipe, water outlet	1
35.	2/3217	Clip, hose 2 1/2"	2
36.	2/3131	Washer, plain 1/4"	3
37.	12/6756	Radiator	1
38.	12/6786	Pipe, water inlet	1
39.	2/3226	Bolt, 1/4" UNF x 1"	3
40.	2/3355	Control heater	1
41.	13/7069	Motor, radiator fan	1
42.	1/2621	Panel, heater vent mounting	1

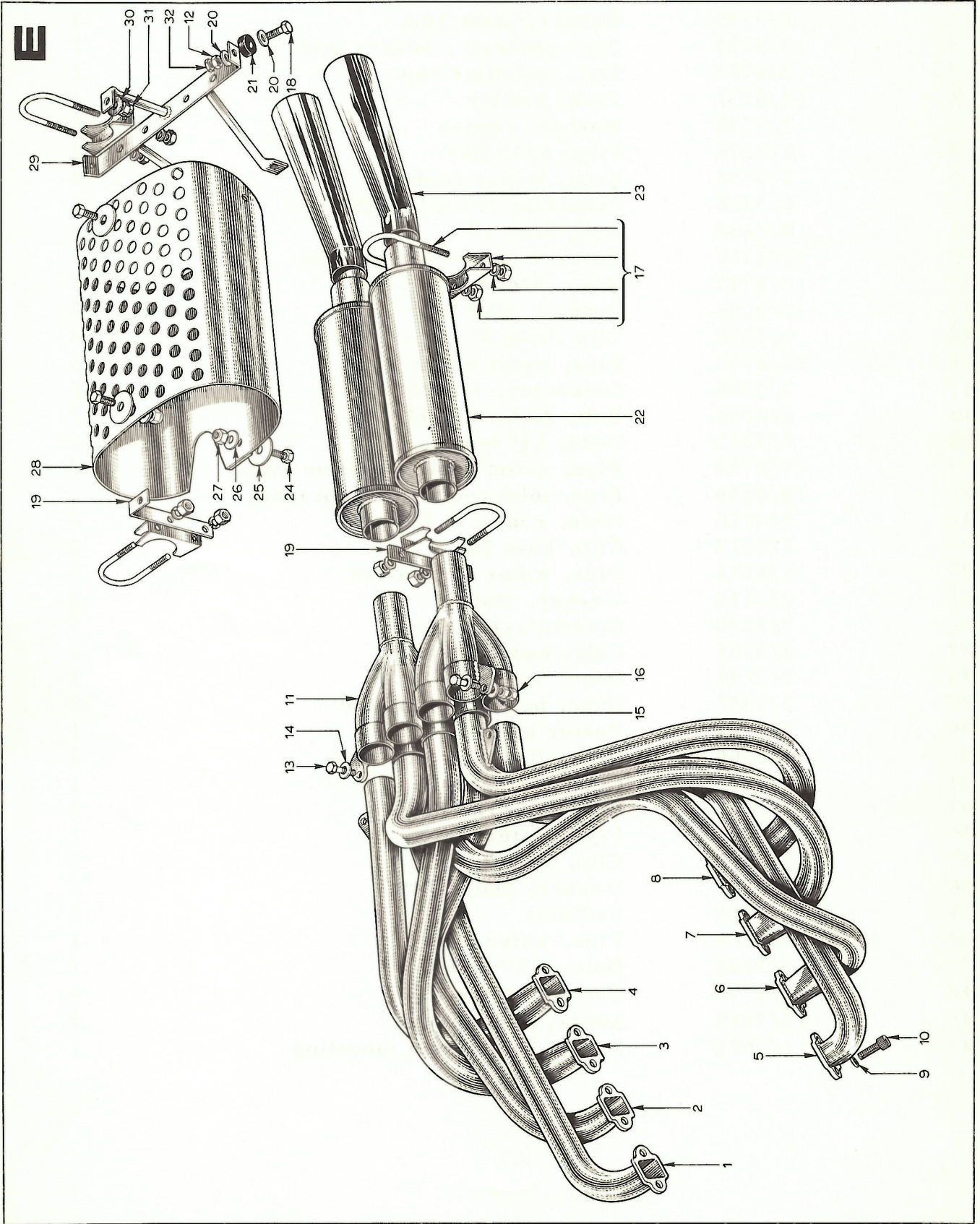


PLATE E

<u>KEY</u> <u>NO.</u>	<u>PART NO.</u>	<u>DESCRIPTION</u>	<u>QTY.</u> <u>PER CAR</u>
1.	GT40P/9/6000/1	Pipe, exhaust No. 1	1
2.	9/6000/2	Pipe, exhaust No. 2	1
3.	9/6000/3	Pipe, exhaust No. 3	1
4.	9/6000/4	Pipe, exhaust No. 4	1
5.	9/6000/5	Pipe, exhaust No. 5	1
6.	9/6000/6	Pipe, exhaust No. 6	1
7.	9/6000/7	Pipe, exhaust No. 7	1
8.	9/6000/8	Pipe, exhaust No. 8	1
9.	2/3137	Washer, spring 3/8"	16
10.	2/3082	Screw, allen 3/8" UNF x 7/8"	16
11.	9/6018	Adaptor, exhaust	2
12.	2/3399	Nut, 5/16" UNF	2
13.	2/3062	Bolt, 1/4 UNF x 3/4 hex.	2
14.	2/3131	Washer, plain 1/4	2
15.	2/3131	Washer, plain 1/4	2
16.	2/3233	Nut, 1/4" UNF	4
17.	9/6013	Clamp assembly, muffler	4
18.	2/3073	Bolt, 5/16 UNF x 1 1/4"	2
19.	9/6019	Bracket, heat shield	
20.	2/3135	Washer, plain 5/16"	4
21.	1/2613	Spacer, body pivot	2
22.	9/6011	Muffler	2
23.	9/6016	Pipe, tail chrome	2
24.	2/3423	Bolt, 5/16" UNF x 1" hex.	3
25.	2/3446	Washer, penny 5/16"	3
26.	2/3134	Washer, plain 5/16"	3
27.	2/3110	Nut, nyloc 5/16" UNF	3
28.	9/6006	Shield, heat	2
29.	9/6017	Bracket, silencer support	1
30.	2/3134	Washer, plain 5/16"	1
31.	2/3110	Nut, nyloc 5/16" UNF	1
32.	2/3111	Nut, plain thin 5/16 UNF	2

F

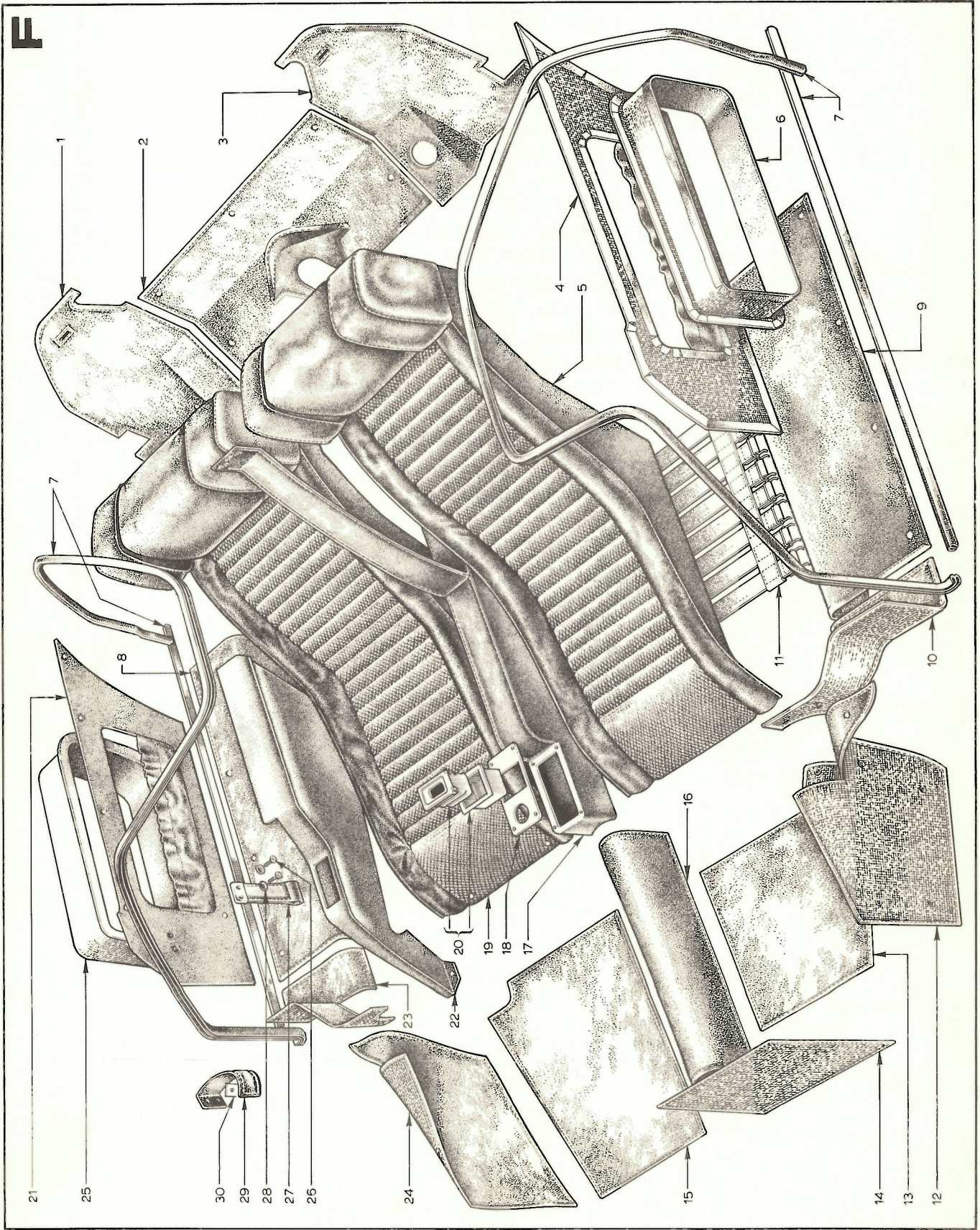


PLATE F

<u>KEY</u> <u>NO.</u>	<u>PART NO.</u>	<u>DESCRIPTION OF PART</u>	<u>QTY.</u> <u>PER CAR</u>
1.	GT40F/1/2833	Trim, rear bulkhead, R. H.	1
2.	1/2834	Trim, rear bulkhead, Centre	1
3.	1/2835	Trim, rear bulkhead, L. H.	1
4.	1/2836	Trim, door L. H.	1
5.	1/2837	Seat, L. H.	1
6.	1/2838	Trim, glove box, door L. H.	1
7.	2/3197	Seal, door	24 ft.
8.	1/2839	Trim, door sill, R. H.	1
9.	1/2840	Trim, door sill, L. H.	1
10.	1/2841	Trim, door sill, front L. H.	1
11.	1/2813	Webbing, seat	2
12.	1/2842	Trim, well, side L. H.	1
13.	1/2843	Carpet, floor L. H.	1
14.	1/2844	Carpet, toeboard L. H.	1
15.	1/2845	Carpet, floor R. H.	1
16.	1/2846	Carpet, centre tunnel	1
17.	1/2847	Trim, centre tunnel	1
18.	1/2694	Panel, ashtray	1
19.	1/2848	Seat, R. H.	1
20.	2/3347	Ashtray	1
21.	1/2849	Trim, door R. H.	1
22.	1/2850	Panel, gearshift lever	1
23.	1/2851	Trim, door sill, front R. H.	1
24.	1/2852	Trim, well, side R. H.	1
25.	1/2853	Trim, glove box, door R. H.	1
26.	2/3483	Screw, No. 6 c/sunk	8
27.	1/2854	Strap, door pull	2
28.	2/3447	Cup, screw	8
29.	1/2855	Strap, door check	2
30.	1/2856	Plate, door check strap	2

G

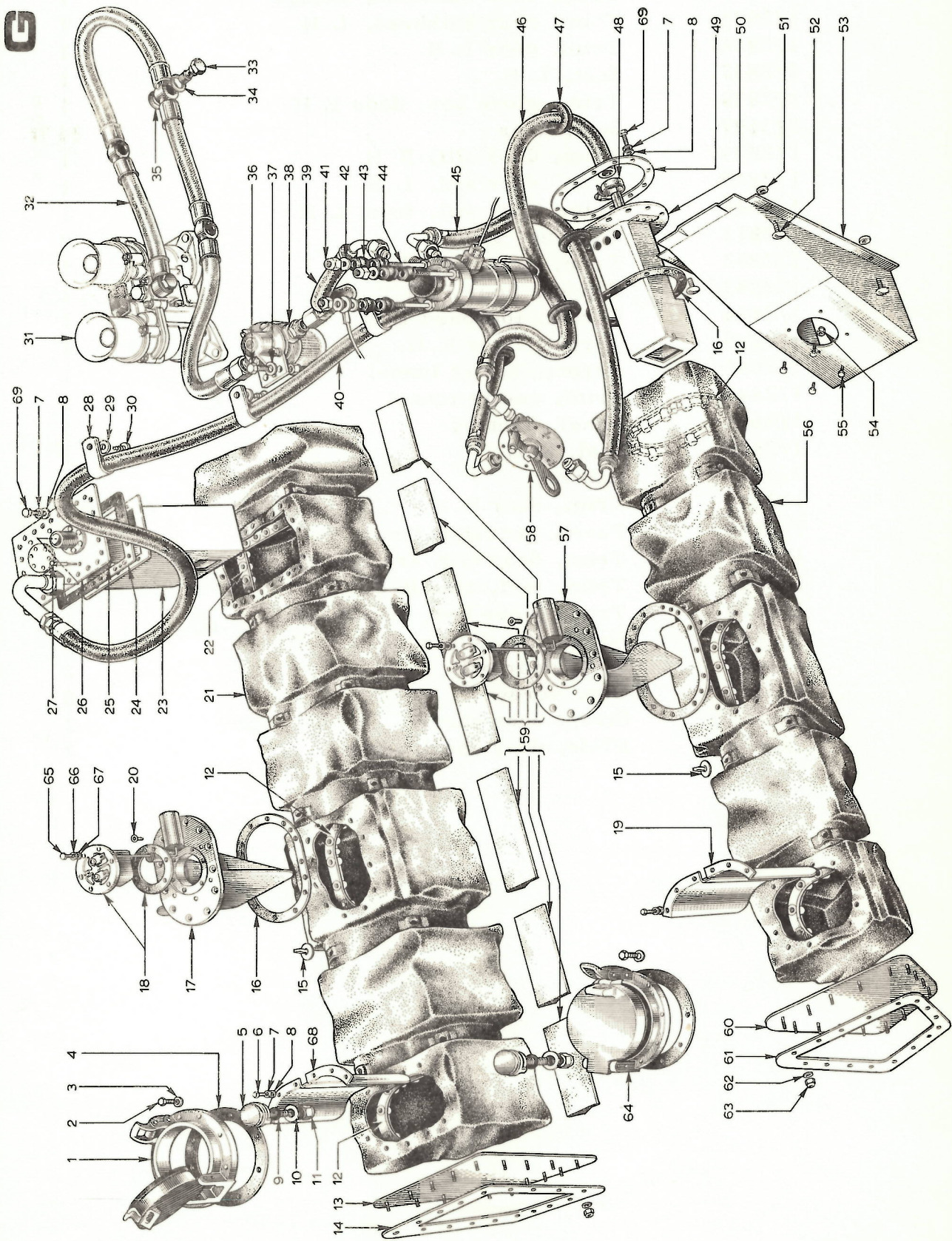


PLATE G

<u>KEY</u> <u>NO.</u>	<u>PART NO.</u>	<u>DESCRIPTION</u>	<u>QTY.</u> <u>PER CAR</u>
1.	GT40P/10/6277	Cap, fuel filler R. H.	1
2.	2/3175	Bolt, 2BA x 1" hex.	8
3.	2/3130	Washer, plain 2BA	16
4.	10/6286	Seal, fuel filler cap	2
5.	10/6296	Valve, non return	2
6.	2/3292	Bolt, 1/4 UNF x 5/8" hex.	12
7.	2/3132	Washer, spring 1/4"	12
8.	2/3131	Washer, plain 1/4"	12
9.	2/3301	'O' ring	2
10.	2/3140	Washer, plain 1/2"	2
11.	2/3120	Nut, nyloc 1/2" UNF	2
12.	10/6273	Ring, nut oval	2
13.	1/2101	Plate, blanking R. H.	1
14.	1/2119	Ring, retaining R. H.	1
15.	10/6274	Clip, bayonet	20
16.	10/6257	Seal, oval nut ring	2
17.	1/2674	Baffle, anti-surge	1
18.	10/6316	Float assembly, fuel gauge	2
19.	1/2471	Baffle, filler neck L. H.	1
20.	2/3391	Screw, socket, c/sunk 1/4" UNF x 3/4"	24
21.	10/6270	Cell, fuel R. H.	1
22.	10/6272	Ring, nut rectangular	1
23.	10/6251	Tank, surge R. H.	1
24.	10/6255	Seal, surge tank	1
25.	10/6340	Nipple, hucking	18
26.	1/2278	Plate, cover, fuel tank Pick-up	1
27.	10/6339	Rivet, hucking	18
28.	2/3358	Plasticlips	12
29.	2/3130	Washer, plain 2BA	12
30.	2/3240	Screw, No. 10 round x 1/2" selftap	12
31.	3/3506	Carburettor, Weber 48 I. D. A.	4
32.	10/6283	Hose, fuel, Fispva valve/ carburettor	1
33.	10/6345	Bolt, banjo Weber	4
34.	10/6342	Washer, banjo Weber	4
35.	10/6343	Washer, banjo Weber	4
36.	2/3062	Bolt, 1/4 UNF x 3/4" hex.	2
37.	2/3131	Washer, plain 1/4"	2
38.	10/6308	Valve, FISPA	1
39.	7/5365/8	Hose, rubber 3/8" bore x 8"	1
40.	7/5365/72	Hose, rubber 3/8" bore x 72"	1
41.	2/3103	Nut, nyloc 10 UNF	3
42.	2/3130	Washer, plain 2BA	3
43.	10/6319	Barrymount, fuel pump mounting	6
44.	2/3388	Stud, 10 UNF x 2 1/4"	3
45.	7/5365/12	Hose, rubber 3/8" bore x 12"	1
46.	7/5365/15	Hose, rubber 3/8" bore x 15"	1
47.	2/3261	Grommet 1"	4
48.	2/3249	Clip, hose 3/4"	7
49.	10/6341	Ring, reinforcing, surge tank L. H.	1
50.	10/6298	Tank, surge L. H.	1





PLATE C

<u>KEY</u> <u>NO.</u>	<u>PART NO.</u>	<u>DESCRIPTION</u>	<u>QTY.</u> <u>PER CAR</u>
51.	GT40F/2/3130	Washer, plain 2BA	4
52.	2/3424	Screw, 2BA x 1/2" oval chrome	4
53.	10/6302	Bracket, 3 way tap mounting	1
54.	2/3099	Nut, nyloc 4BA	4
55.	2/3314	Bolt, 4BA x 1/2" hex.	4
56.	10/6297	Cell, fuel L. H.	1
57.	1/2675	Baffle, anti surge	1
58.	10/6307	Tap, 3 way	1
59.	10/6276	Packing, fuel cell	7 ft.
60.	1/2102	Plate, blanking	1
61.	1/2120	Ring, retaining	1
62.	2/3129	Washer, plain 4BA	32
63.	2/3099	Nut, nyloc 4BA	32
64.	10/6256	Cap, fuel filler L. H.	1
65.	2/3400	Bolt, 3/16 whit. x 1/2"	12
66.	2/3288	Washer, shakeproof 2BA internal	12
67.	2/3130	Washer, plain 2BA	12
68.	1/2470	Baffle, filler neck R. H.	1
69.	2/3221	Bolt - 1/4 UNF x 7/8" hex.	38

H

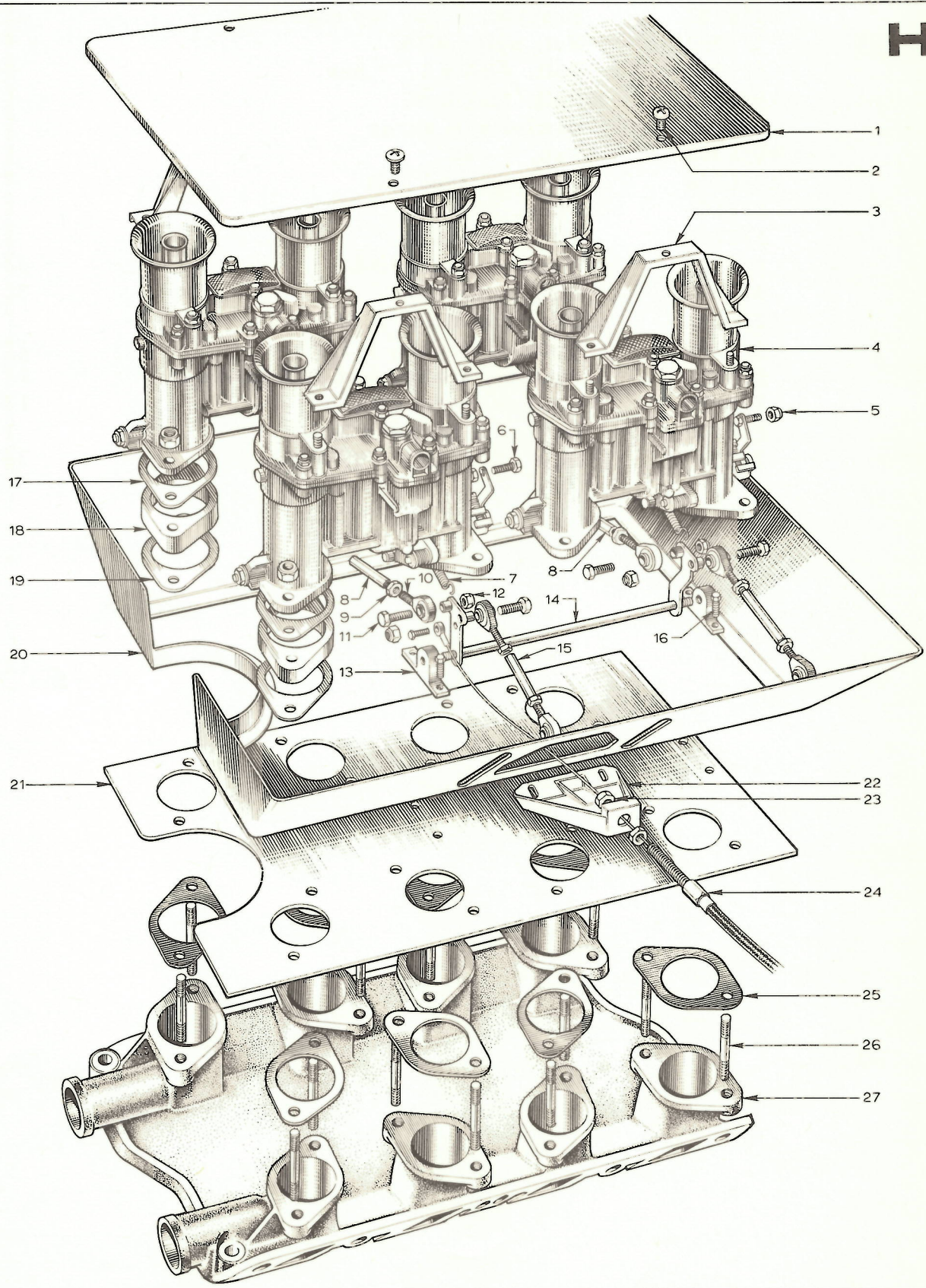
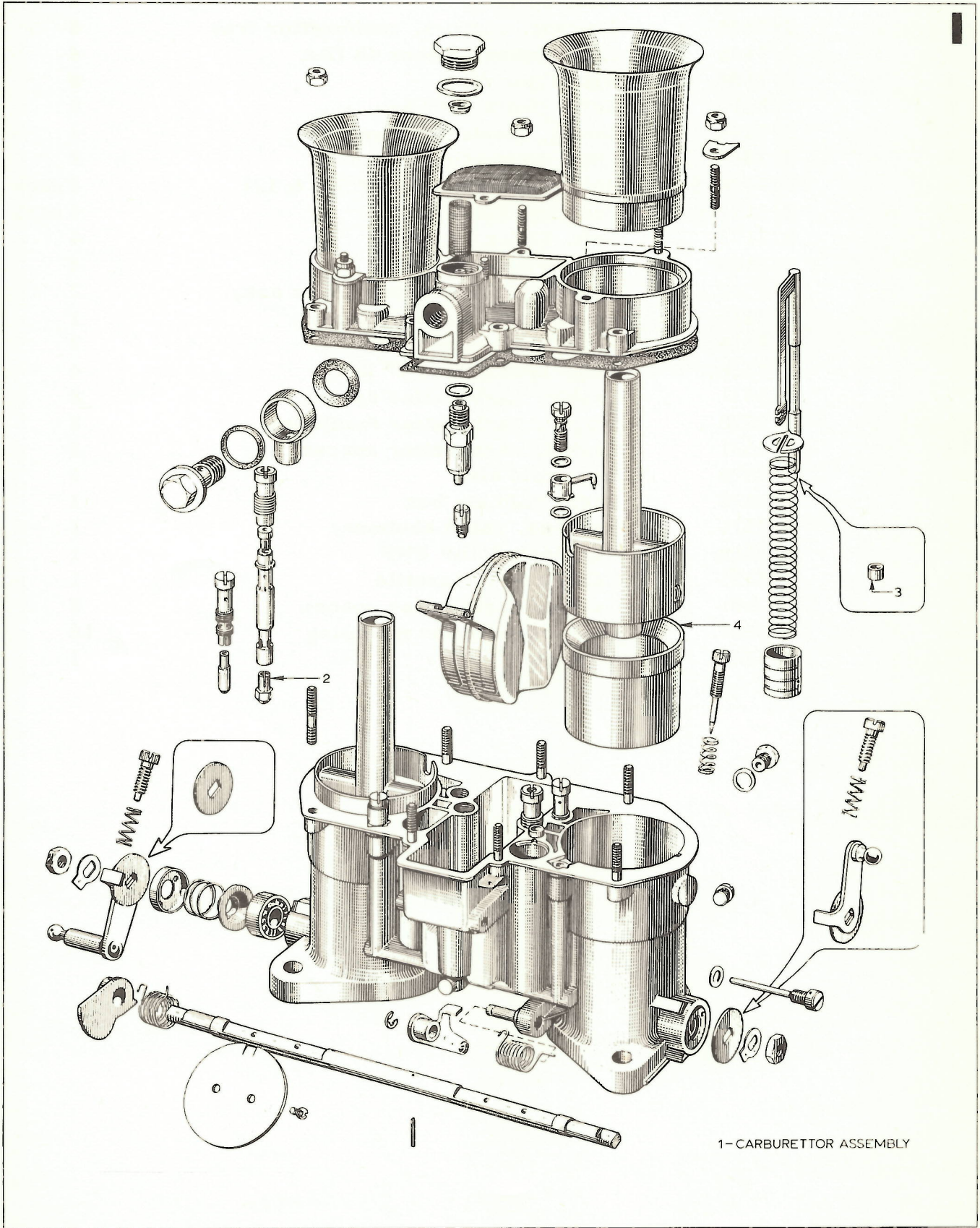


PLATE H

<u>KEY</u> <u>NO.</u>	<u>PART NO.</u>	<u>DESCRIPTION OF PART</u>	<u>QTY.</u> <u>PER CAR</u>
1.	GT40P/2/3199	Tray, upper, carburettor	1
2.	2/3050-1	Stud, Dzus	4
3.	2/3200	Bracket, support, carburettor tray	4
4.	3/3506	Carburettor, Weber 48 IDA	4
5.	2/3100	Nut, nyloc 2BA	8
6.	2/3410	Bolt, 2BA x 3/4" hex.	8
7.	3/3693	Spring, throttle return	2
8.	3/3517	Link, connecting R. H.	2
9.	2/3104-5	Nut, plain thin 10 UNF RH & LH	4 each
10.	2/3177-8	Bearing, RH & LH	4 each
11.	2/3175	Bolt, 2BA x 1" hex.	4
12.	2/3100	Nut, nyloc 2BA	4
13.	3/3522	Bracket, intermediate lever assy.	2
14.	3/3512	Lever assy. intermediate	1
15.	3/3518	Link, connecting L. H.	2
16.	2/3226	Bolt, 1/4" UNF x 1" hex.	4
17.	3/3531	Casket, carburettor spacer	8
18.	3/3523	Spacer, carburettor insulating	8
19.	3/3531	Casket, carburettor spacer	8
20.	3/3528	Box, cold air	1
21.	3/3524	Base, cold air box	1
22.	3/3511	Bracket, cable abutment	1
23.	2/3118	Nut, lock 7/16" UNF	1
24.	3/3533	Cable assy., throttle	1
25.	3/3531	Casket, carburettor spacer	8
26.	3/3532	Stud, carburettor mounting	16
27.	3/3525	Manifold	1



1-CARBURETTOR ASSEMBLY

PLATE I

<u>KEY</u> <u>NO.</u>	<u>PART NO.</u>	<u>DESCRIPTION OF PART</u>	<u>QTY.</u> <u>PER CAR</u>
1.	GT40P/3/3506	Carburettor assembly, Weber 48 IDA	4
2.	3/3651	Jet, main	8
3.	3/3659	Restrictor-pump	4
4.	3/3650	Choke	8

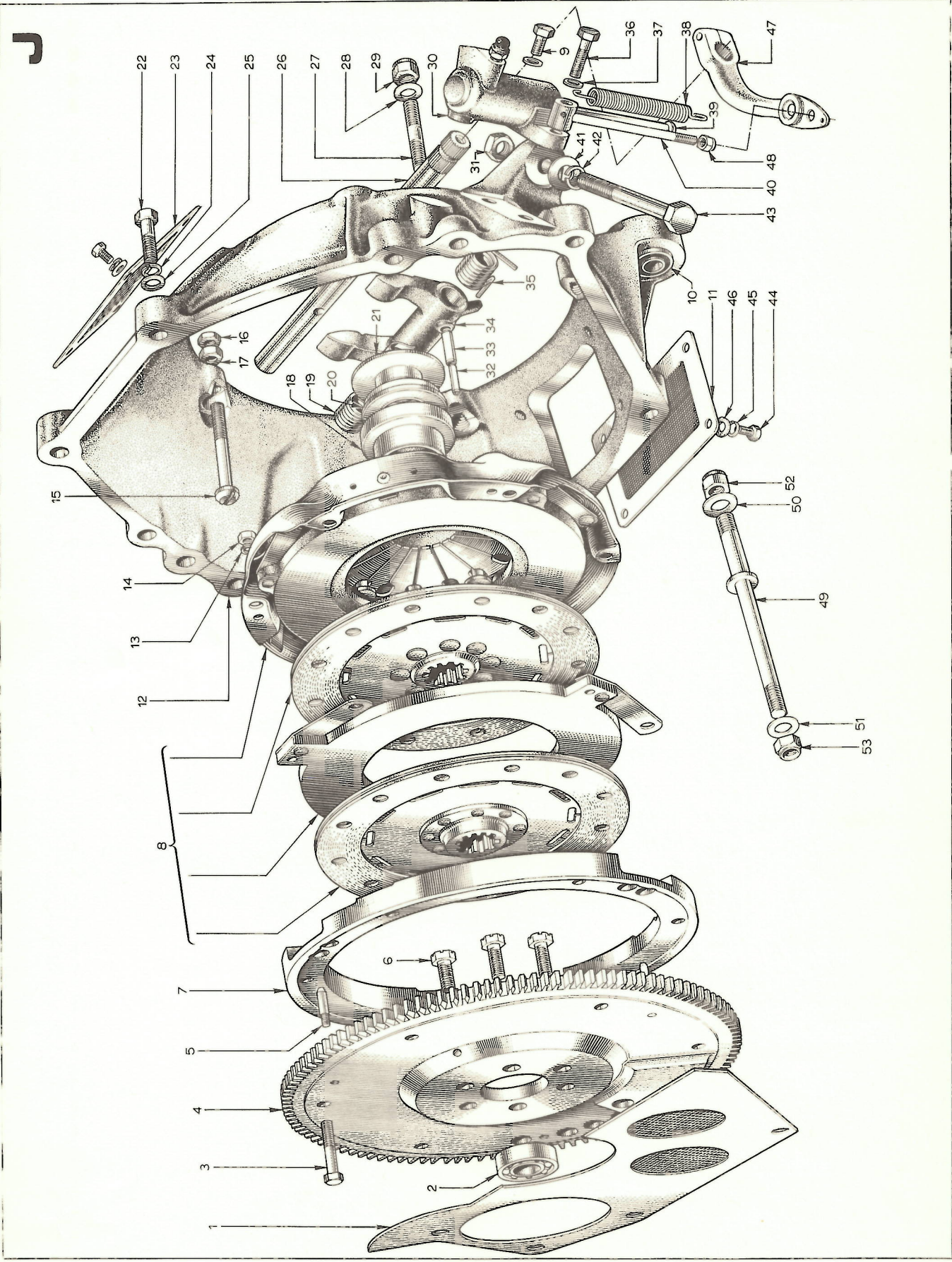
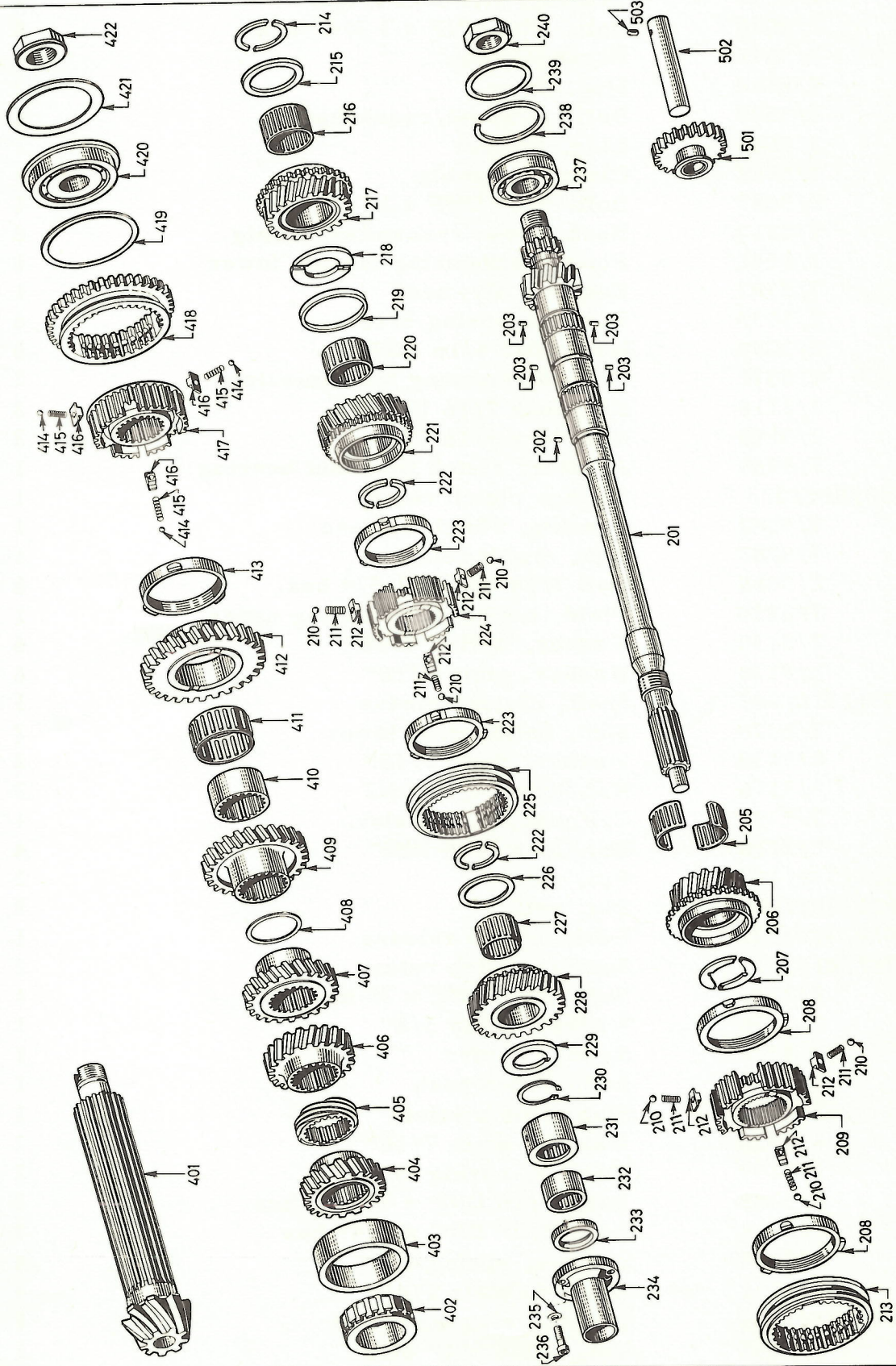


PLATE J

<u>KEY</u> <u>NO.</u>	<u>PART NO.</u>	<u>DESCRIPTION OF PART</u>	<u>QTY.</u> <u>PER CAR.</u>
1.	GT40P/7/5349	Plate, bellhousing closing front	1
2.	7/5277	Bearing, flywheel spigot	1
3.	2/3076	Bolt, 5/16 UNF x 1 3/4" hex.	6
4.	3/3641	Flywheel assy.	1
5.	7/5380	Stud, drive	3
6.	3/3590	Bolt, flywheel/crankshaft	6
7.	3/3643	Ring, adaptor	1
8.	7/5368	Clutch assembly	1
9.	2/3083	Bolt, 3/8" UNF x 1"	1
10.	7/5310	Bush, lower transmission mtg.	2
11.	7/5351	Plate, bellhousing closing lower	1
12.	7/5307	Housing, flywheel	1
13.	2/3135	Washer, spring 5/16	6
14.	2/3399	Nut, plain 5/16 UNF	6
15.	7/5371	Bolt, bellhousing transmission	2
16.	2/3118	Nut, lock 7/16 UNF	2
17.	2/3118	Nut, lock 7/16 UNF	2
18.	7/5369	Adaptor, clutch throwout bearing	1
19.	0732/010/023	Spring, clutch return	1
20.	7/5282	Bearing, clutch release	1
21.	7/5283	Hub, clutch release	1
22.	2/3088	Bolt 7/16 UNC x 1 3/4 hex.	6
23.	7/5350	Plate, bellhousing closing upper	1
24.	2/3139	Washer, spring 7/16"	6
25.	2/3138	Washer, plain 7/16"	6
26.	1031/310/002	Shaft, clutch release	1
27.	7/5376	Stud, bellhousing lower	2
28.	2/3138	Washer, plain 7/16"	2
29.	2/3116	Nut, nyloc 7/16 UNF	2
30.	7/5252	Cylinder, clutch slave	1
31.	2/3118	Nut, lock 7/16 UNF	4
32.	0631/329/152	Pin, roll	2
33.	0631/329/070	Pin, roll	2
34.	1031/310/001	Fork, clutch release	1
35.	0732/010/019	Spring, clutch return	2
36.	2/3243	Bolt, 3/8" UNC x 2" hex.	1
37.	2/3136	Washer, plain 3/8"	1
38.	7/5378	Spring, return	1
39.	7/5275	Rod, clutch push	1
40.	7/5374	Stop, clutch safety	1
41.	2/3138	Washer, plain 7/16"	2
42.	2/3139	Washer, spring 7/16"	2
43.	2/3235	Bolt, 7/16 UNF x 3.5/8" hex.	2
44.	2/3068	Bolt, 1/4" UNC x 3/4" hex.	4
45.	2/3132	Washer, spring 1/4"	4
46.	2/3131	Washer, plain 1/4"	4
47.	1031/310/004	Lever, release, clutch	1
48.	2/3107	Nut, nyloc 1/4" UNF	1
49.	1/2510	Bolt, engine mount, rear, lower	2
50.	2/3140	Washer, plain 1/2"	2
51.	2/3138	Washer, plain 7/16"	2
52.	2/3120	Nut, nyloc 1/2" UNF	2
53.	2/3116	Nut, nyloc 7/16" UNF	2



K



ZF Synchroma Gearbox 5 DS - 25 Drive shaft Output shaft Rev. gear

PLATE K

<u>KEY</u> <u>NO.</u>	<u>PART NO.</u>	<u>DESCRIPTION OF PART</u>	<u>QTY.</u> <u>PER CAR</u>
201.	1031-302-002	Shaft,	1
202.	0631-306-006	Dowel	2
203.	0731-306-016	Dowel, (modified)	2
205.	0735-320-139	Cage, needle roller	1
206.	1031-202-012	Gear, 2nd	1
207.	0730/200-080/1/2/3	Washers, split	A/R
208.	1025-304-112	Ring, synchro	2
209.	1031-302-023	Body, synchro	1
210.	0635-460-009	Ball, synchro	6
211.	0732-040-336	Spring, synchro	6
212.	1025-304-111	Piece slide, synchro	6
213.	1025-304-151	Sleeve, synchro	1
214.	0730-101-303/4/5	Washers, split	A/R
215.	0730-101-306/7/8	Pieces, distance	A/R
216.	0735-320-138	Cage, needle roller	1
217.	1031-202-016	Gear, 3rd	1
218.	0730-200-078/9 085	Washer, split	A/R
219.	0730-101-264	Ring	1
220.	0735-320-136	Cage, needle roller	1
221.	1031-202-029	Gear, 4th	1
222.	0730-101-300/1/2	Washers, split	A/R
223.	1031-302-028	Ring, synchro	2
224.	1031-302-025	Body, synchro	1
225.	1031-302-027	Sleeve, synchro	1
226.	0730/101/297/8/9	Pieces, distance	A/R
227.	0735-320-137	Cage, needle roller	1
228.	1031-202-018	Gear, 5th	1
229.	0730-200-072/3/4/5	Washers	A/R
230.	0630-501-025	Circlip	1
231.	0735-320-135	Race, needle roller	1
232.	0635-303-111	Race, needle roller	1
233.	0634-310-994	Ring, seal (oil seal)	1
234.	1031-302-013	Flange, guide	1
235.	0630-302-012	Washer, lock	3
236.	0636-101-005	Screw, socket	3
401.		Shaft, pinion	1
402.	0735-455-002	Bearing roller assy., pinion	1
403.	0730-160-280	Bearing path, pinion	1
404.		Gear, 5th	1
405.	1016-304-124	Pinion, speedo	1
406.		Gear, 4th	1
407.		Gear, 3rd	1
408.	0730-200-067/8/9 70/71	Washer, shim	A/R
409.		Gear, 2nd	1
410.	1031-304-006	Ring, inner	1
411.	0735-320-140	Cage, needle roller	1
412.		Gear, 1st.	1
413.	1025-304-112	Ring, synchro	1
414.	0635-460-009	Ball, synchro	3
415.	0732-040-336	Spring, synchro	3
416.	1025-304-111	Slide piece, synchro	3
417.	1031-204-002	Body, synchro	1
418.	1031-304-033	Sleeve, synchro	1



PLATE V

<u>KEY</u> <u>NO.</u>	<u>PART NO.</u>	<u>DESCRIPTION OF PART</u>	<u>QTY.</u> <u>PER CAR</u>
1.	GT40P/13/7085	Headlamp	2
2.	13/7119	Bulb, quartz iodine	2
3.	13/7091	Light cluster, rear	2
4.	13/7113	Bulb	A/R
5.	2/3346	Arm, wiper	1
6.	2/3345	Blade, wiper	1
7.	13/7023	Box, wiper wheel	1
8.	13/7043	Pipe, bundy wiper drive	2
9.	13/7075	Motor, wiper road	1
10.	13/7060	Regulator	1
11.	13/7006	Horn	2
12.	13/7017	Washer unit	1
13.	13/7008	Passlamp assy.	2
14.	13/7086	Bulb	A/R
15.	3/3606	Coil	1

W

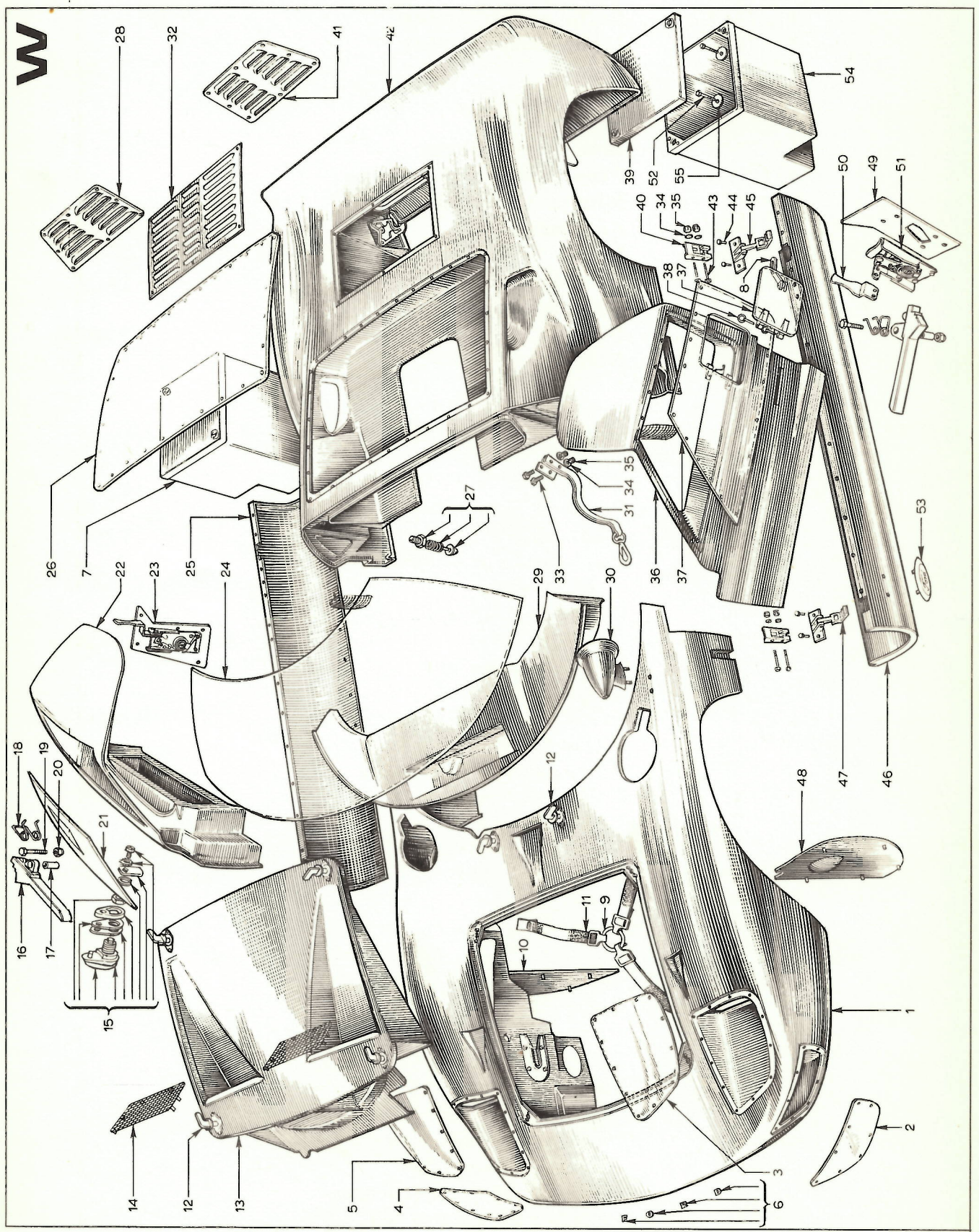
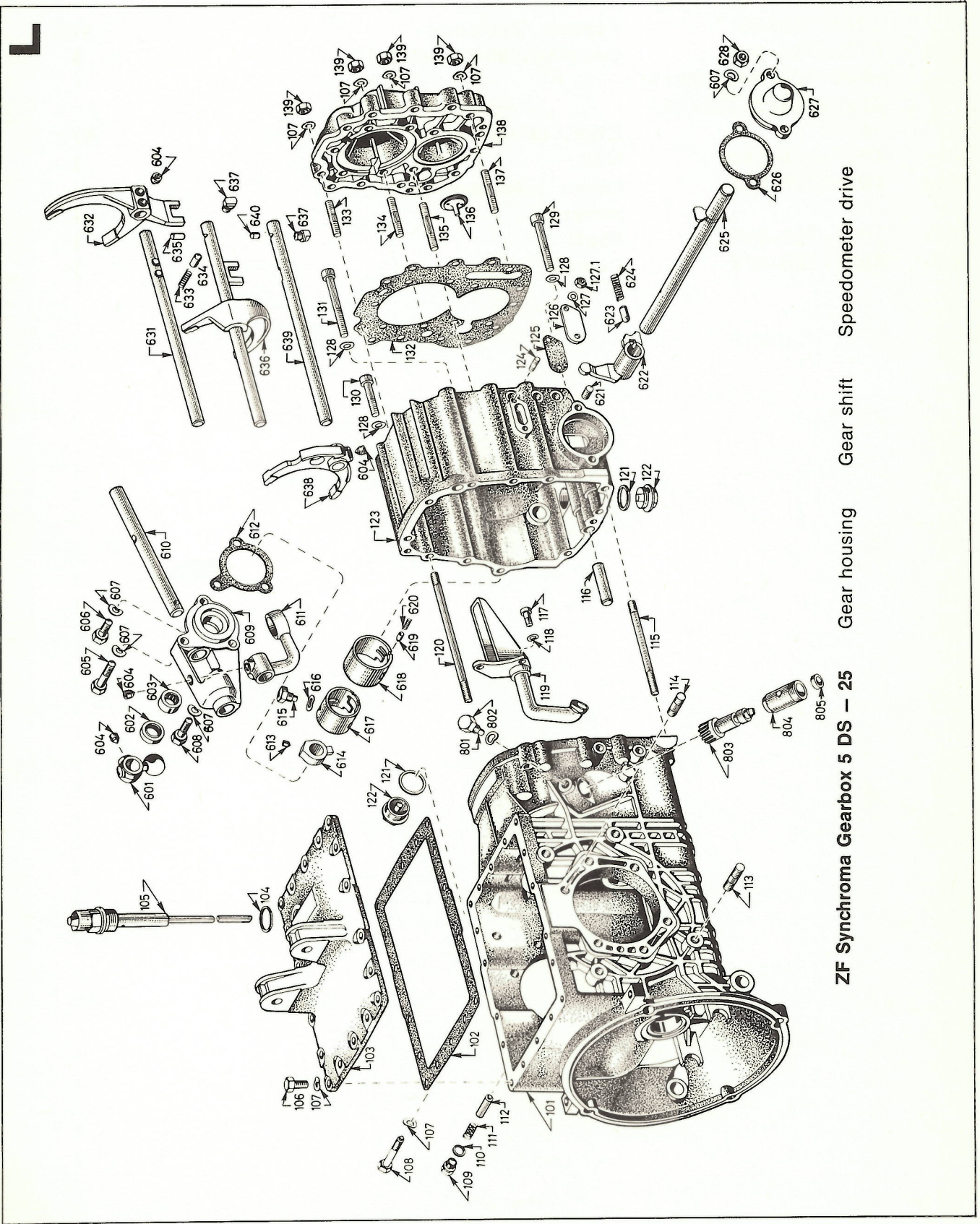


PLATE K

<u>KEY</u> <u>NO.</u>	<u>PART NO.</u>	<u>DESCRIPTION OF PART</u>	<u>QTY.</u> <u>PER CAR</u>
419.	4607-302-005/18/16/ 17/18/19/20/21/22/ 30/31/35/29	Pieces, distance	A/R
420.	0735-340-027	Bearing, ball, helical	1
421.	4607-302-006/7/8/9/ 10/11/12/13/14/34/ 36/32	Disc, adjustment	A/R
422.	0737-006-010	Nut	1
501.	1035-205-001	Gear, intermediate reverse	1
502.	1031-305-002	Shaft	1
503.	0631-308-024	Dowel	1



ZF Synchronoma Gearbox 5 DS - 25      Gear housing      Gear shift      Speedometer drive

PLATE L

<u>KEY NO.</u>	<u>PART NO.</u>	<u>DESCRIPTION OF PART</u>	<u>QTY. PER CAR.</u>
101.	1031-301-001	Housing, gear	1
102.	1016-301-064	Gasket	1
103.	1031-301-007	Cover	1
104.	0634-801-165	Gasket, copper	1
105.	1031-201-001	Dipstick	1
106.	0636-015-077	Screw, (hex. head)	18
107.	0630-302-016	Washer, lock	41
108.	1016-301-010	Screw	1
109.	0636-304-001	Screw, lock	1
110.	0634-801-152	Washer, copper	1
111.	2303-306-004	Spring, pressure	1
112.	1031-301-019	Pin	1
113.	0636-604-066	Stud	18
114.	0636-607-030	Stud	2
115.	0636-604-196	Stud	2
116.	0631-306-131	Dowel	2
117.	0636-102-004	Screw, set	2
118.	0630-302-011	Washer, lock	2
119.	1031-201-007	Feed, oil	1
120.	0636-604-210	Stud	4
121.	0634-801-200	Washer, copper	2
122.	0015-300-160	Plug, drain magnetic	2
123.	1031-201-005	Housing	1
124.	0636-610-003	Stud	2
125.	1031-301-006	Gasket	1
126.	1031-301-005	Plate, cover	1
127.	0630-601-004	Washer, lock	2
127.1	0637-006-015	Nut	2
128.	0630-302-015	Washer, lock	5
129.	0636-101-310	Screw, socket	1
130.	0636-101-282	Screw, socket	3
131.	0636-101-099	Screw, socket	1
132.	1031-301-004	Gasket	1
133.	0636-604-121	Stud	5
134.	0636-604-209	Stud	9
135.	0636-604-211	Stud	1
136.	1031-301-029	Shaft, oil feed input	1
137.	0636-604-045	Stud	1
138.	1031-301-005	Cover, rear	1
139.	0637-006-076	Nut	22
601.	1031-306-018	Finger, shifting	1
602.	0734-310-009	Seal	1
603.	0635-303-044	Rod, roller	1
604.	1016-306-011	Screw, grub	2
605.	0636-010-079	Setscrew	1
606.	0636-015-084	Setscrew	1
607.	0630-302-016	Washer, spring	3
608.	0638-015-092	Setscrew	1
609.	1031-205-011	Body, gear shift	1
610.	1031-306-046	Shaft	1
611.	1031-306-041	Arm, gear shift	1
612.	1031-306-017	Gasket	1





<u>KEY</u> <u>NO.</u>	<u>PART NO.</u>	<u>DESCRIPTION OF PART</u>	<u>QTY.</u> <u>PER CAR</u>
613.	0731-311-003	Grubscrew	2
614.	1031-306-054	Finger	1
615.	1236-308-009	Locating bolt	1
616.	0630-302-019	Washer	1
617.	1031-306-015	Inner selector barrel	1
618.	1031-306-014	Outer	1
619.	1022-306-041	Plunger	1
620.	1019-331-001	Spring	1
621.	0636-604-023	Stud	2
622.	1031-206-004	Lever - reverse	1
623.	1209-314-004	Interlock plunger	1
624.	1236-306-033	Interlock spring	1
625.	1031-206-003	Cross shaft	1
626.	1031-306-035	Casket	1
627.	1031-306-034	Centreing flange	1
628.	0637-006-018	Nut	2
801.	1236-308-009	Screw	1
802.	0630-302-019	Washer	1
803.	1031-308-001	Speedo shaft	1
804.	1236-301-049	Bush	1
805.	0734-300-009	Seal	1